



# Charleston County Greenbelt Programs



*McClellanville Civic Club - October 9, 2012*



# Half-Cent Sales Tax



**November 2004 - Charleston County voters approved levying a half-cent sales tax for transportation improvements and greenspace preservation.**



**\$221 million dedicated to preserving greenspace**





# Greenbelt Boards



- **Greenbelt Advisory Board** – 14 member citizens advisory board appointed by Council to present recommendations on how to spend Greenbelt portion of sales tax & to evaluate the program.
- **Greenbelt Bank Board** – 9 member board appointed by Council. Modeled after State Conservation Bank



# Greenbelt Plan



## Corridors



## Active Greenspace



## Natural Infrastructure



## COMPREHENSIVE GREENBELT PLAN

CHARLESTON COUNTY, SOUTH CAROLINA  
2005-2030 ADOPTED JUNE 6, 2006

Prepared for  
CHARLESTON COUNTY, SOUTH CAROLINA

Prepared by  
GREENWAYS INCORPORATED  
WHITE & SMITH, LLC



## Productive Landscapes

## Passive Greenspace



## Natural Resources



## Heritage Landscapes













# Greenbelt Goals



Protecting 40,000 acres through the following system components:

-  16,240 acres of rural greenbelt lands
-  10,275 acres in Francis Marion National Forest
-  5,610 acres of Lowcountry wetlands
-  4,675 acres of Park and Recreation Commission-owned lands
-  2,000 acres of urban greenbelt lands
-  1,200 acres of greenway corridors





# Where the Green Goes



**\$221 Million**

**\$36 Million**  
County  
Parklands

**\$66.5 Million**  
Rural Greenbelt  
Program

**\$28.5 Million**  
Urban  
Greenbelt  
Program

**\$90 Million**  
Debt Service and  
Program  
Administration

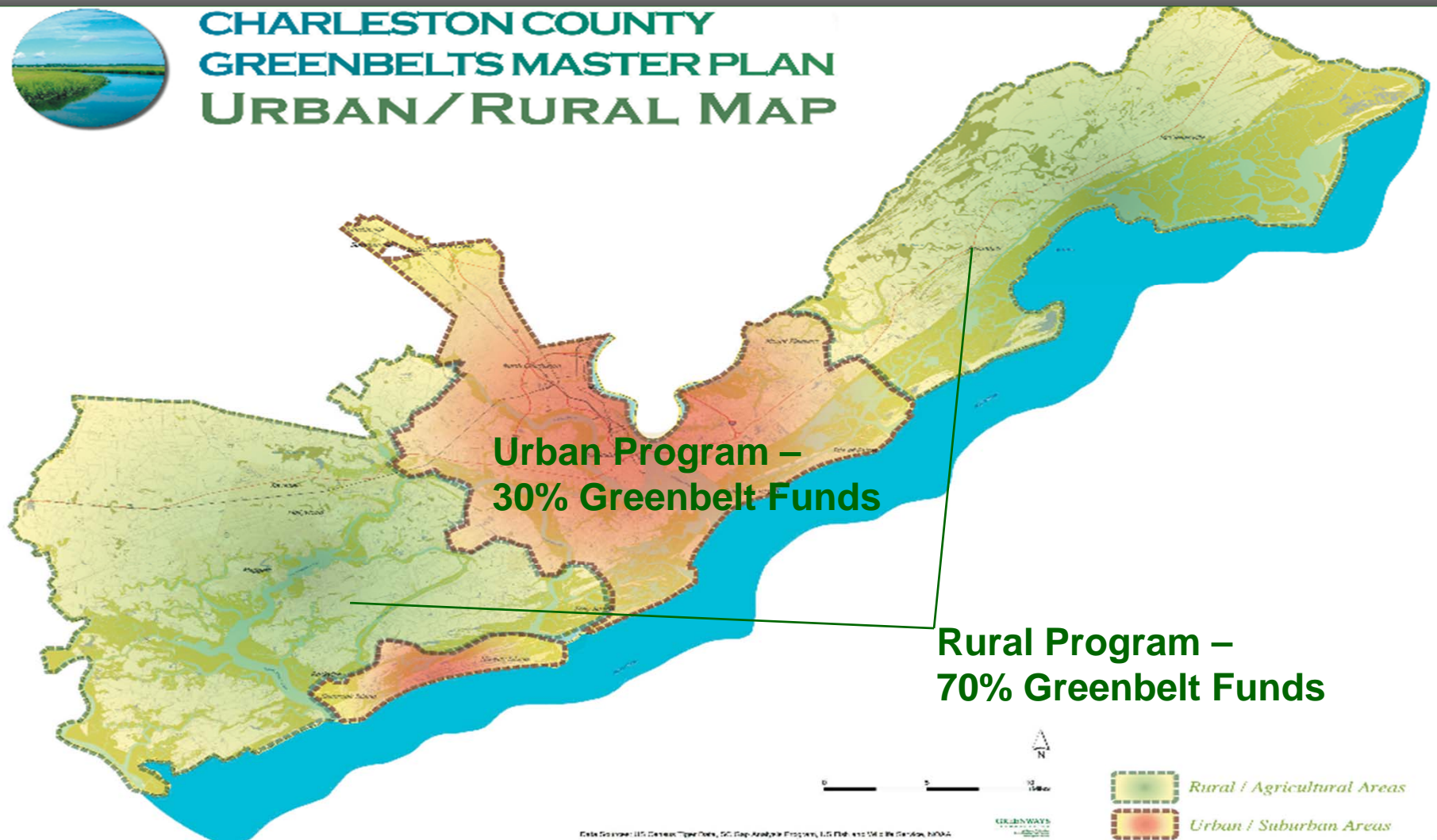




# Urban/Rural Programs



## CHARLESTON COUNTY GREENBELTS MASTER PLAN URBAN/RURAL MAP







# Finding Land to Preserve



County does not purchase or manage land



Municipalities, other government agencies and non-profit environmental conservation groups team-up with voluntary, willing property owners



County awards greenbelt money as grants to other governments or conservation groups to purchase property or rights



Other governments or conservation groups manage land





# Application Process








- Application Submission
- Staff reviews applications & conducts site visits
- Greenbelt Boards review projects
- Boards make recommendations to County Council
- Grant Agreements Executed
- Closing & Funds Dispersed
- Annual Evaluations



# Land Protected to Date



**20,559 acres have already been protected since the implementation of the program in 2007:**

-  ***7,071 acres of rural land***
-  ***4,287 acres within the Francis Marion National Forest***
-  ***5,756 acres of Lowcountry wetlands***
-  ***4,748 acres for Park and Recreation Commission regional parks***
-  ***530 acres of urban land***



**\$78 million**  
*Greenbelt  
Funds Awarded*

**\$113 million**  
*as match*





# Rural Program To Date



- **Total Acres Protected** **16,898**
  - Easements 12,215
  - Fee Simple 4,683
- **Total Funds Awarded** **\$52.9 million**
  - Easements \$20.0 m
  - Fee Simple \$32.9 m
- **Average Cost Per Acre** **\$3,122**
  - Easements \$1,634
  - Fee Simple \$7,005
- **Match Provided** **\$89.4 million**
  - Easements \$63.6 m
  - Fee Simple \$25.8 m



# Rural Funds



**Allocation     \$65.3 million**

**Awarded     \$52.9 million**

**Remaining     \$12.4 million**

**81% of funds awarded**





# Town of McClellanville Projects



- 2 Projects
- 5 Acres
- \$110,000 Greenbelt
- \$111,486 Match



Pinckney Street  
3.07 Acres



Old Cemetery Open Space  
1.603 Acres



# McClellanville Area Projects



- 10 Projects:
  - 7 Public use; 3 Private land
- 4,381 Acres:
  - 2,148 Public use; 2,233 Private land
- \$9.4 Million Greenbelt
  - \$7.5 m Public use; \$1.9 m Private land
- \$12.8 Million Match:
  - \$8.1 m Public use; \$4.7 m Private land

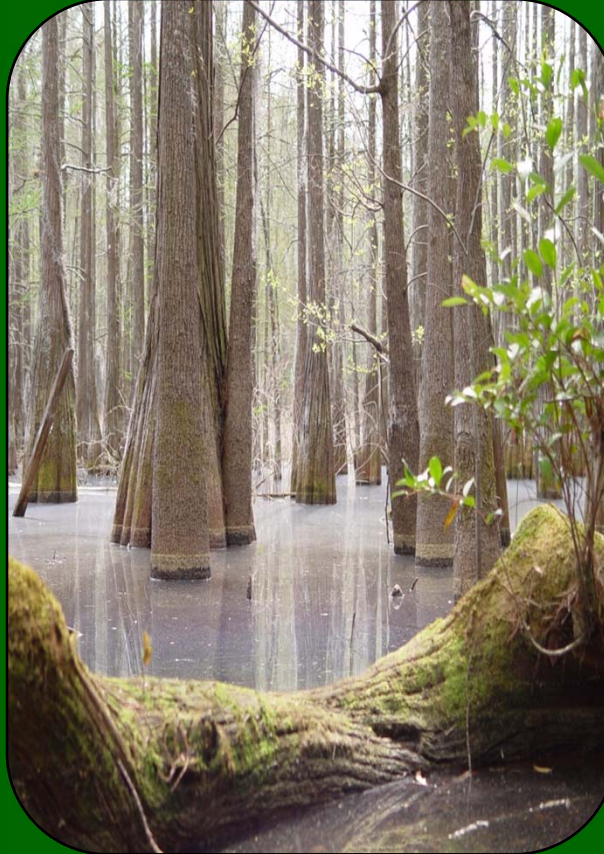




# Francis Marion National Forest Lands



Tibwin Tract  
900 Acres



Murrell Tract  
96 Acres



Oak Hill Farm  
388 Acres (64 acres owned by USFS)





# Other Public Use Properties



Wambaw Tract - 100 Acres



Sweetgrass Society - 71 Acres



Two Pines Tract – 813 Acres





# Conservation Easements Properties Near McClellanville



Hampton Plantation  
1124 Acres



Palmetto Plantation  
785 Acres



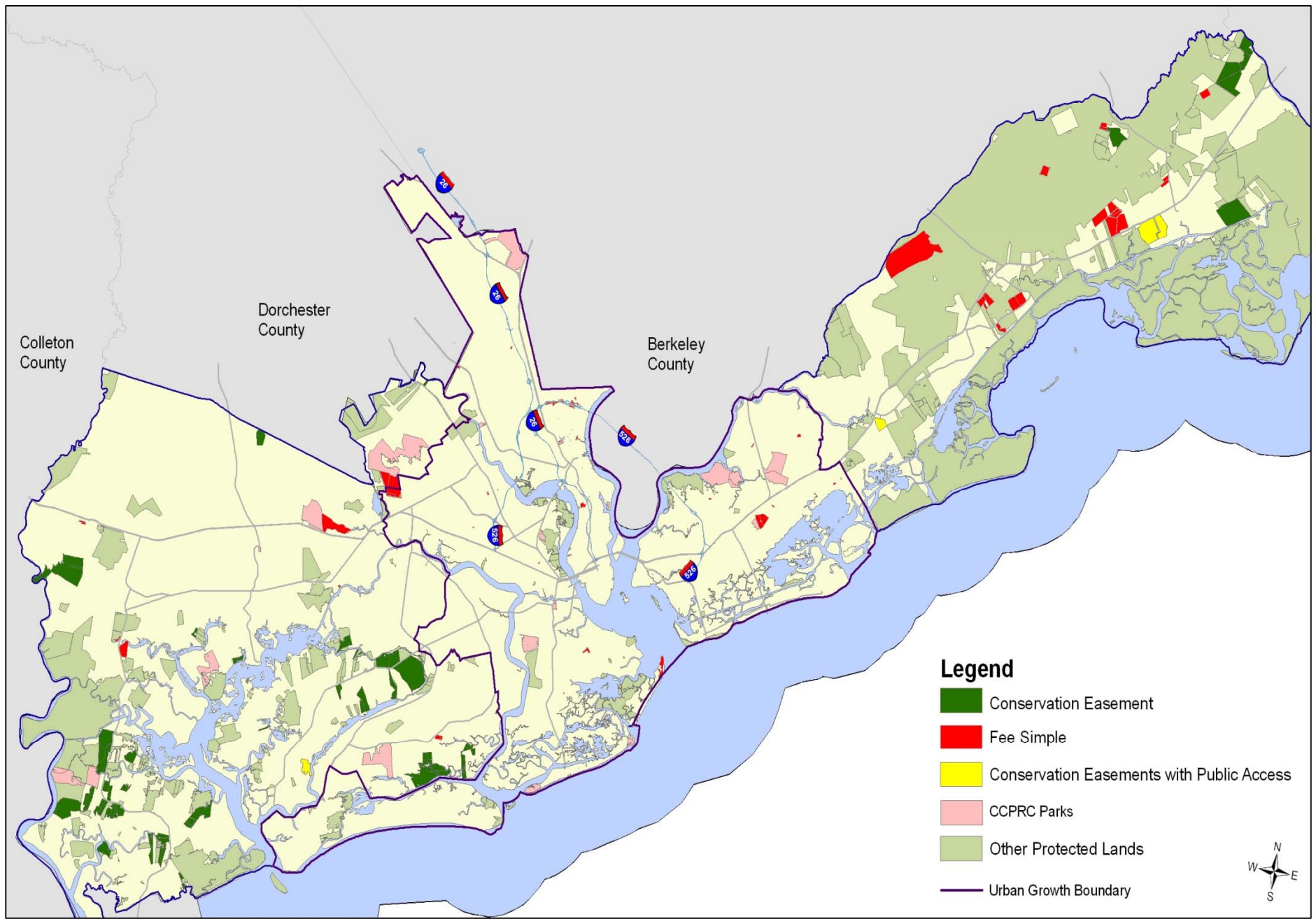


# Future US Fish and Wildlife Property – Papa's Island



- Approved 2012
- \$200,000
- 104 acres
- Hope to close early 2013





Charleston County Greenbelt Projects (2007 - 2011)



# Charleston County Greenbelt Program



For more information, please visit our website at [www.smallchangeforbigchange.org](http://www.smallchangeforbigchange.org) or contact Cathy Ruff at 843-202-7204 or [cruff@charlestoncounty.org](mailto:cruff@charlestoncounty.org).