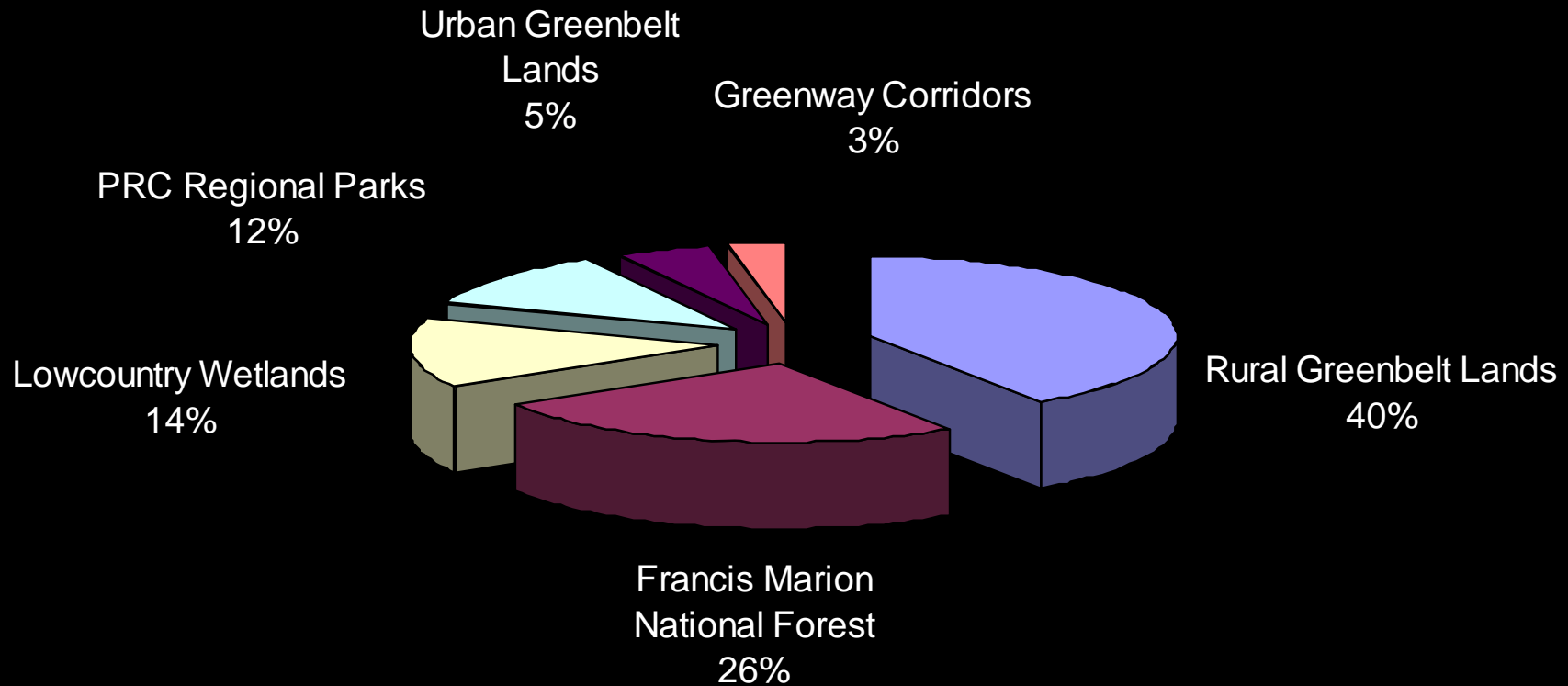


2005/2006
Greenbelt

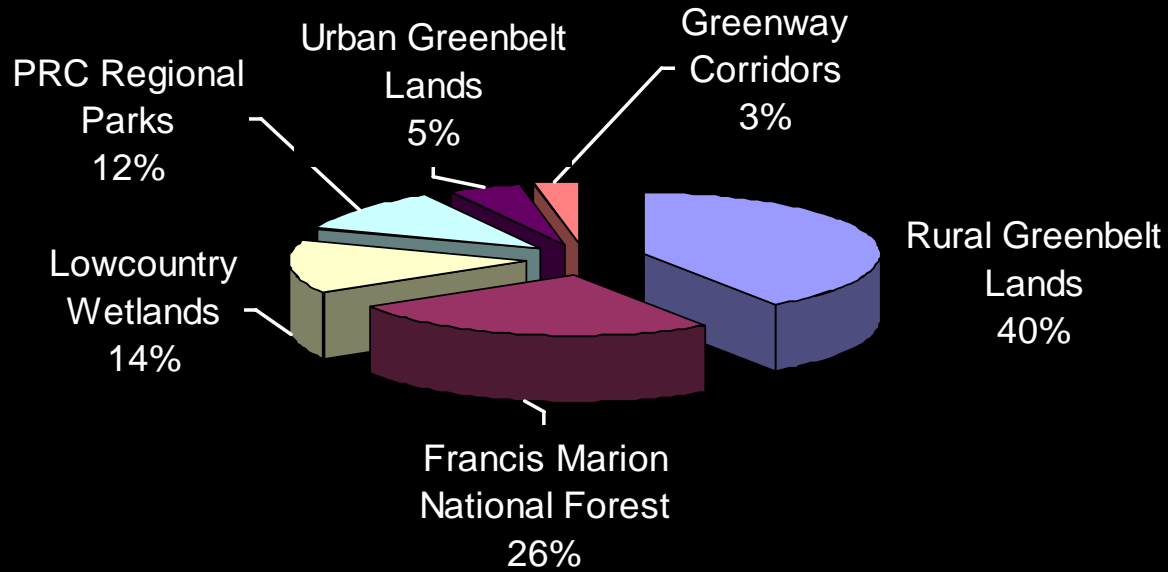
Charleston County Greenbelt System Component Goals



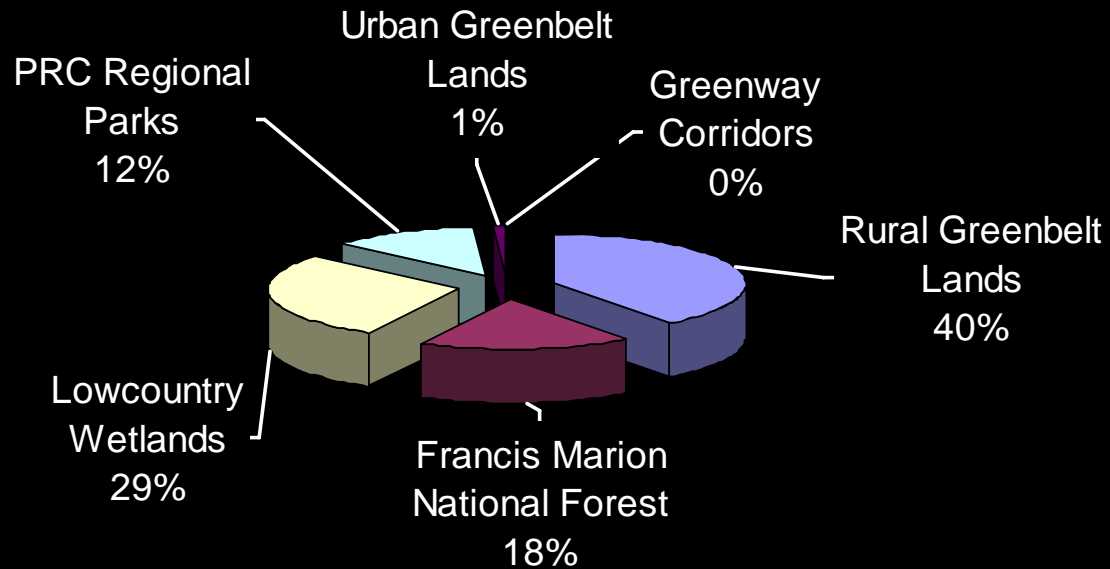
Goal = 40,000 acres

Charleston County Greenbelt System Component Goals compared to Acres to Date

Goal =
40,000
acres

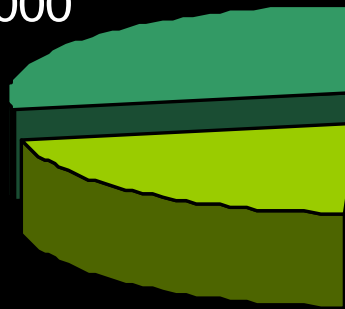


Acres to
Date =
16,386



Greenbelt Program \$ Allocation

PRC,
\$36,500,000

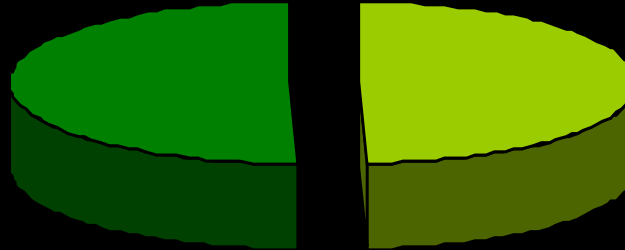


urban,
\$28,500,000

rural, \$66,500,000

How Much \$ Was Guaranteed for Public Access?

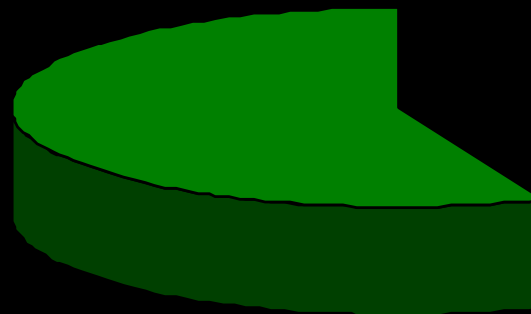
\$66 M for
Greenbelt
Bank (Rural
Program)



\$64.5 M for
PRC and
Urban Parks

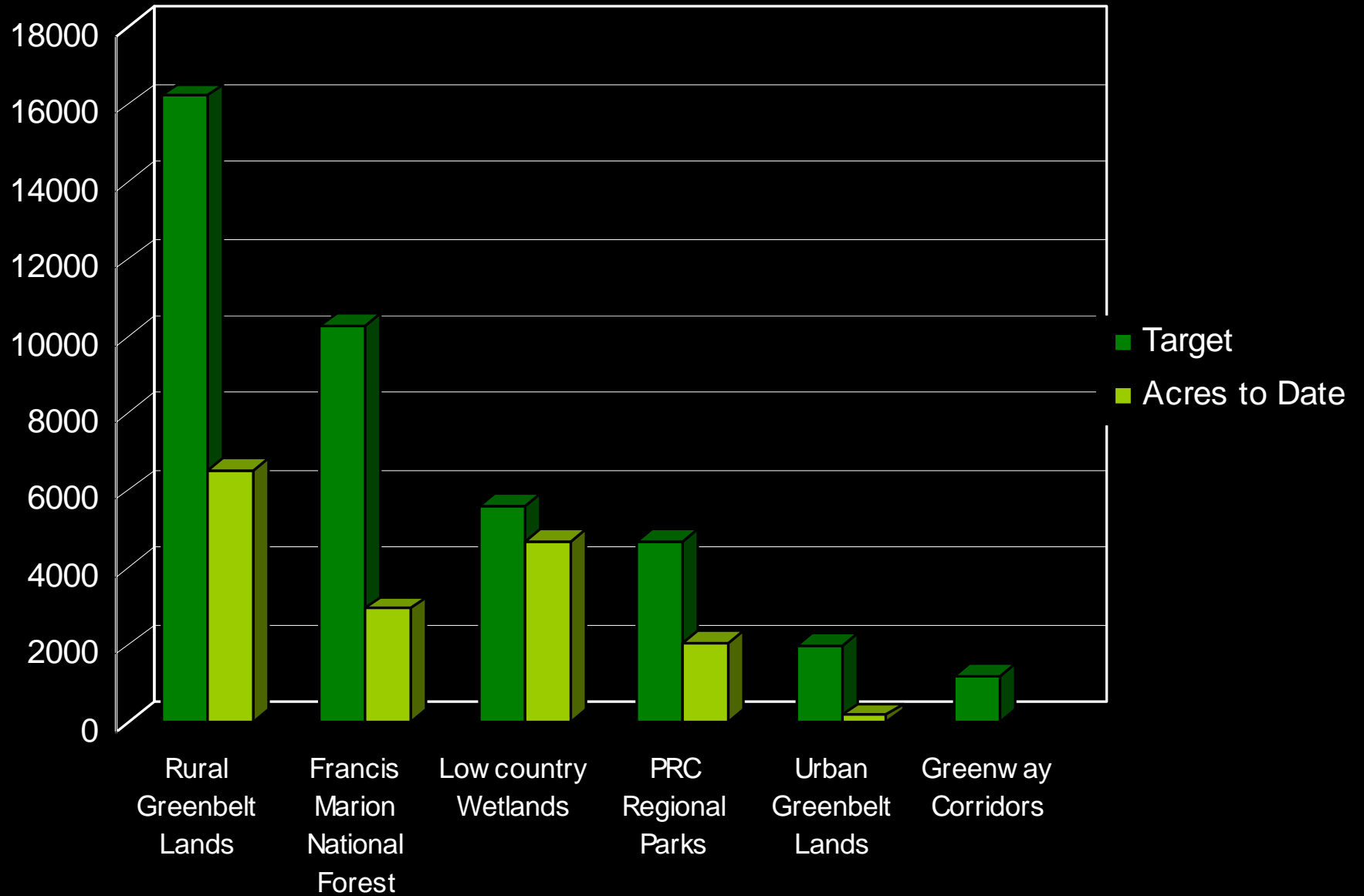
Acres for Public Access

Rural, 3,210

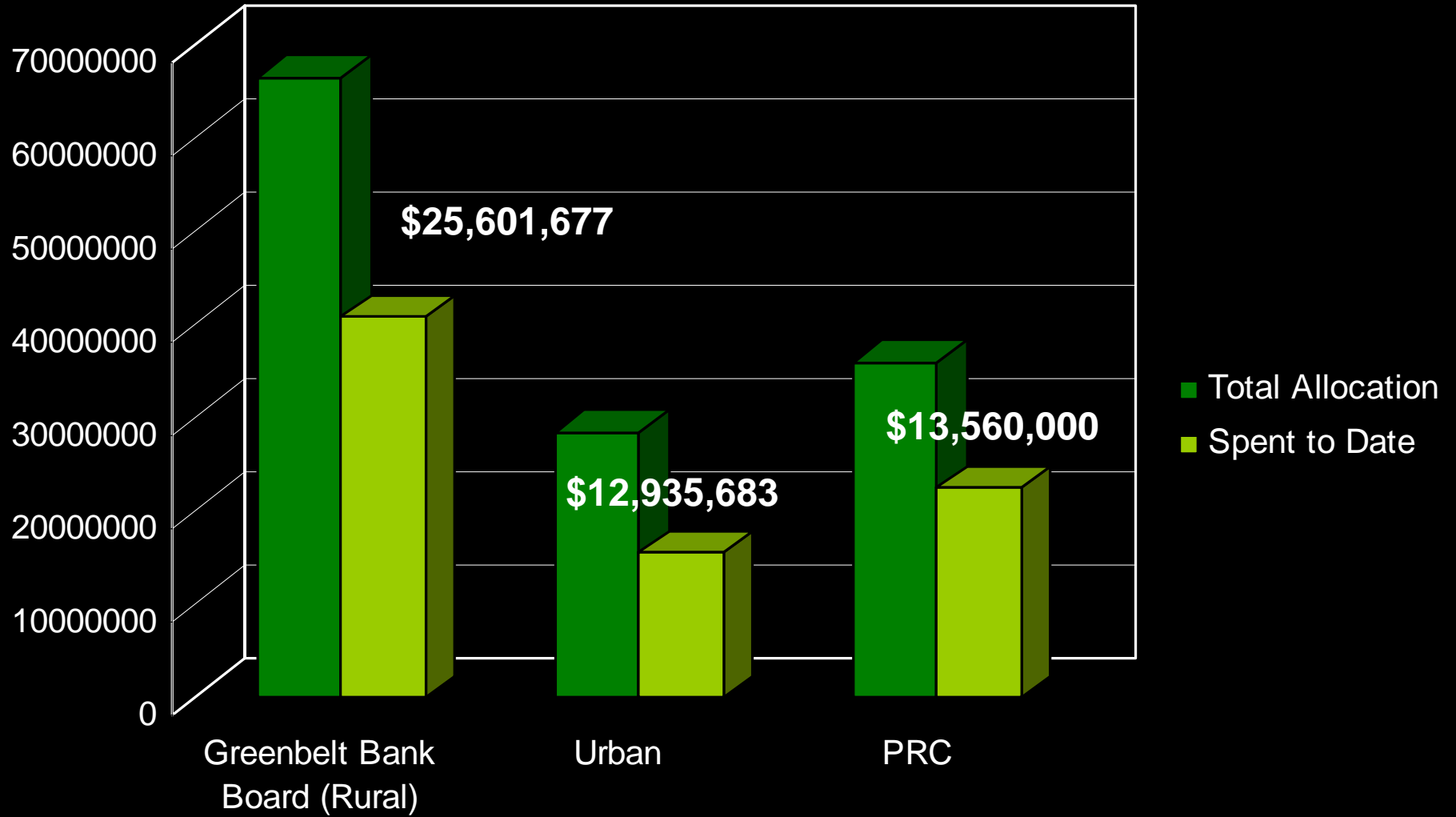


Urban and PRC,
2,509

Are We Getting Close to our Goal?



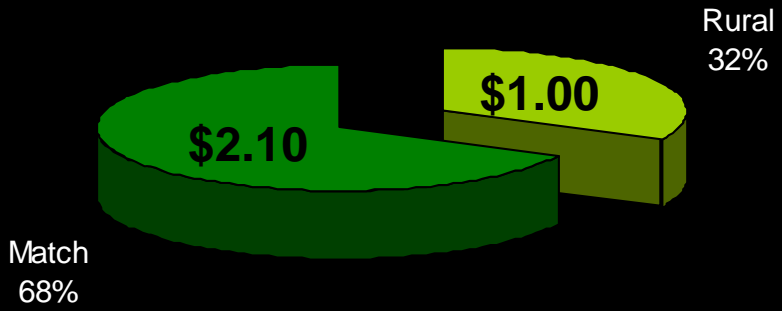
How Much \$ Remains?



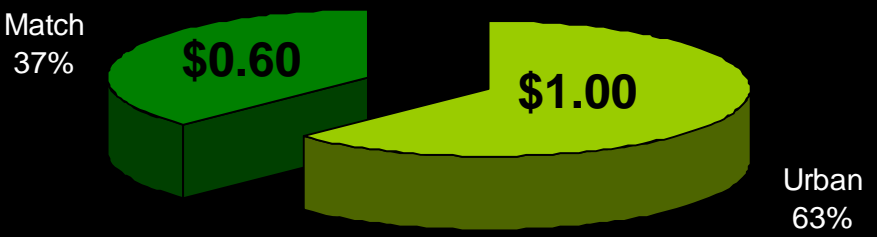
Leverage for Greenbelt Program



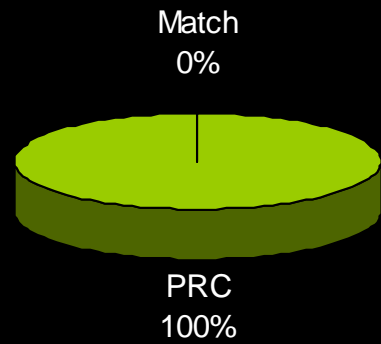
Leverage Used by Rural Program



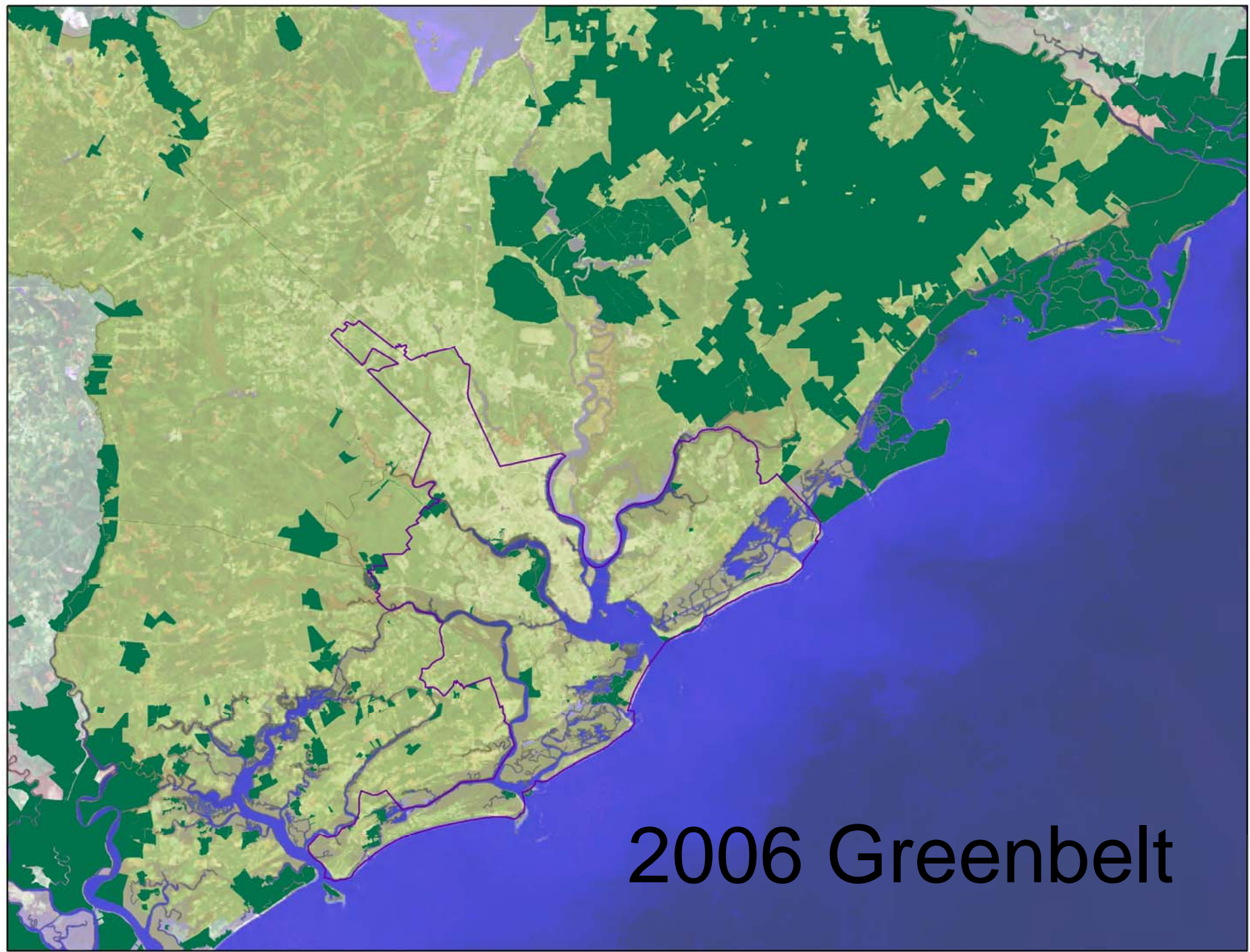
Leverage Used by Urban Program



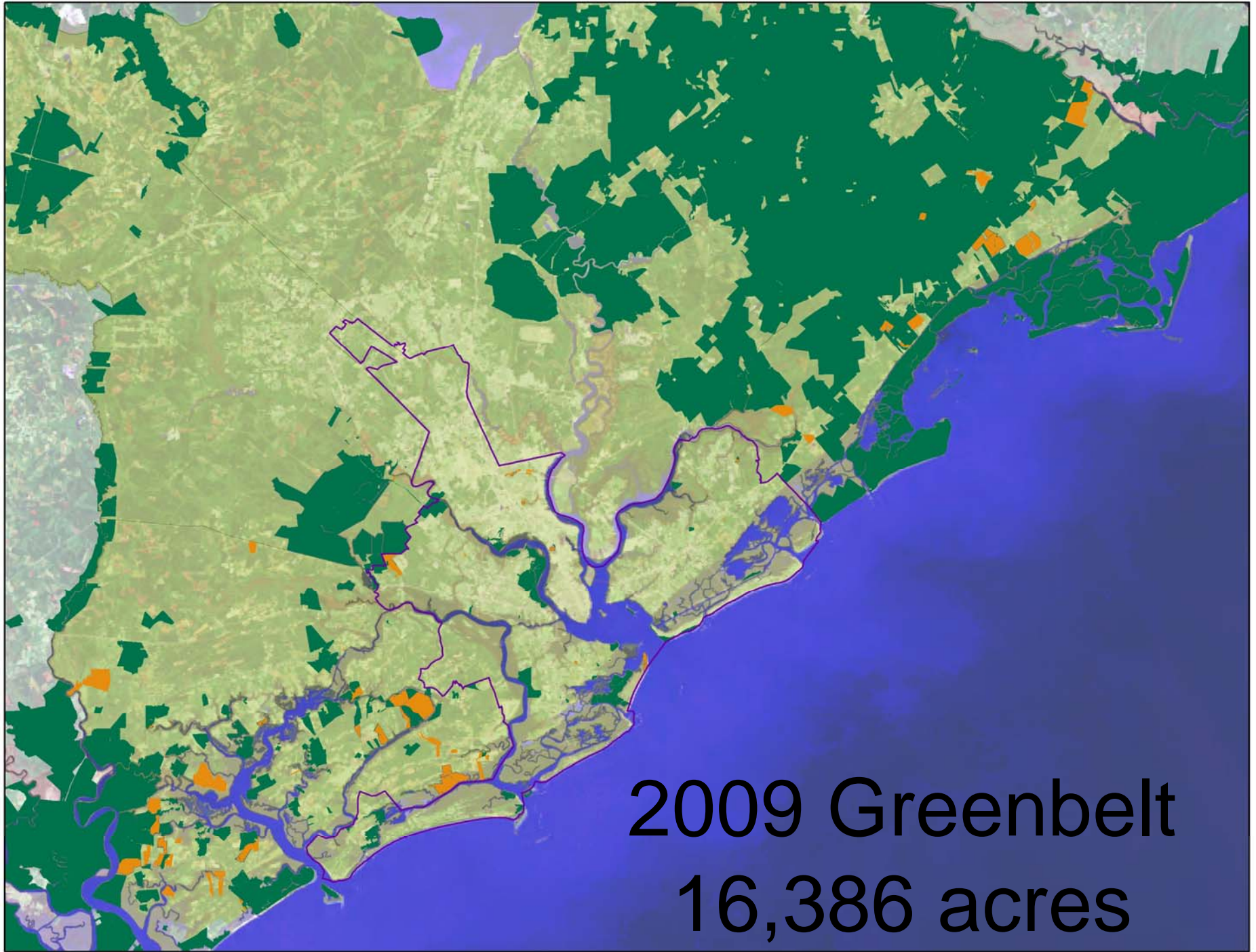
Leverage Used by PRC



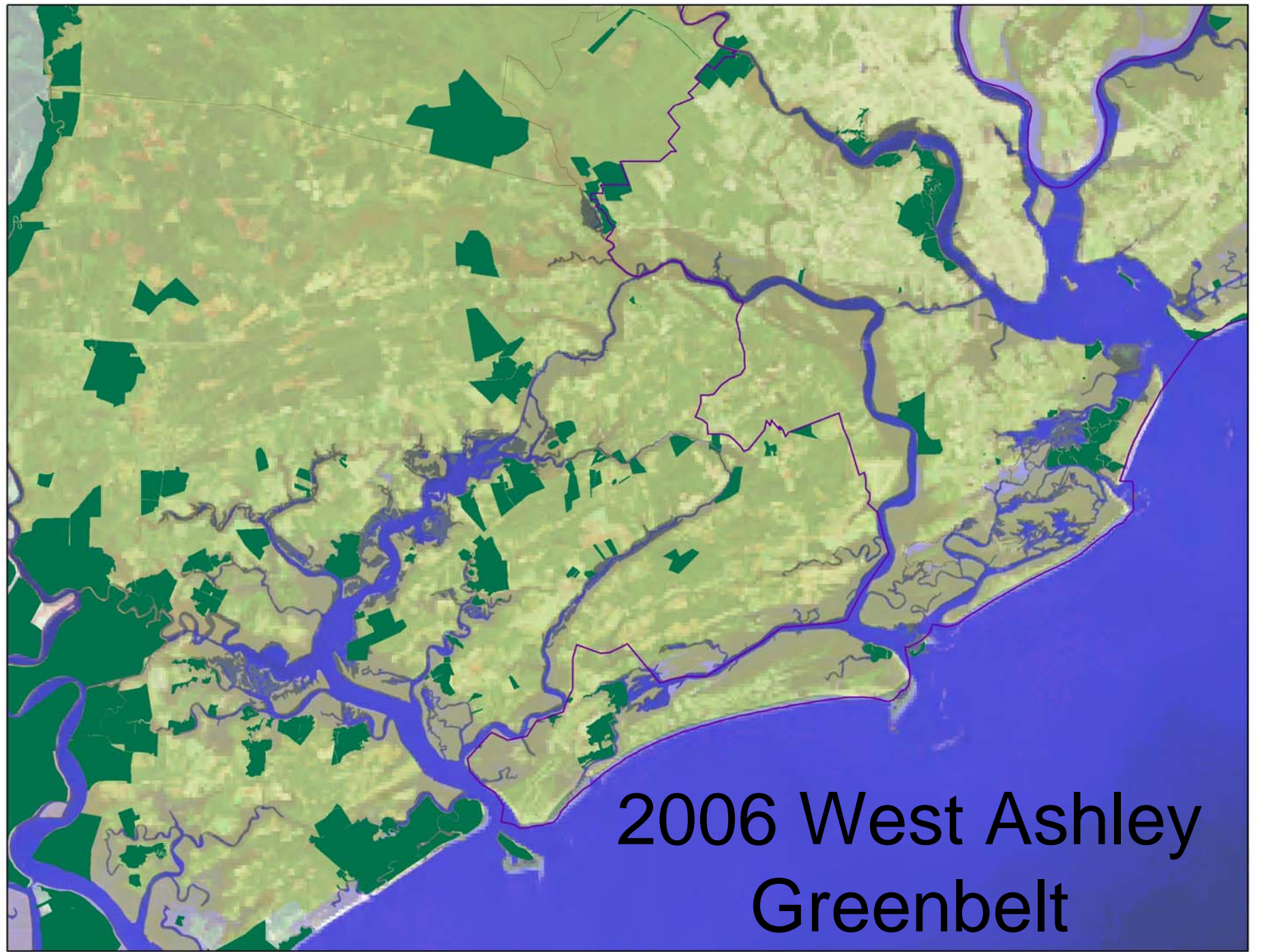
**Where is the Sales
Tax working?**



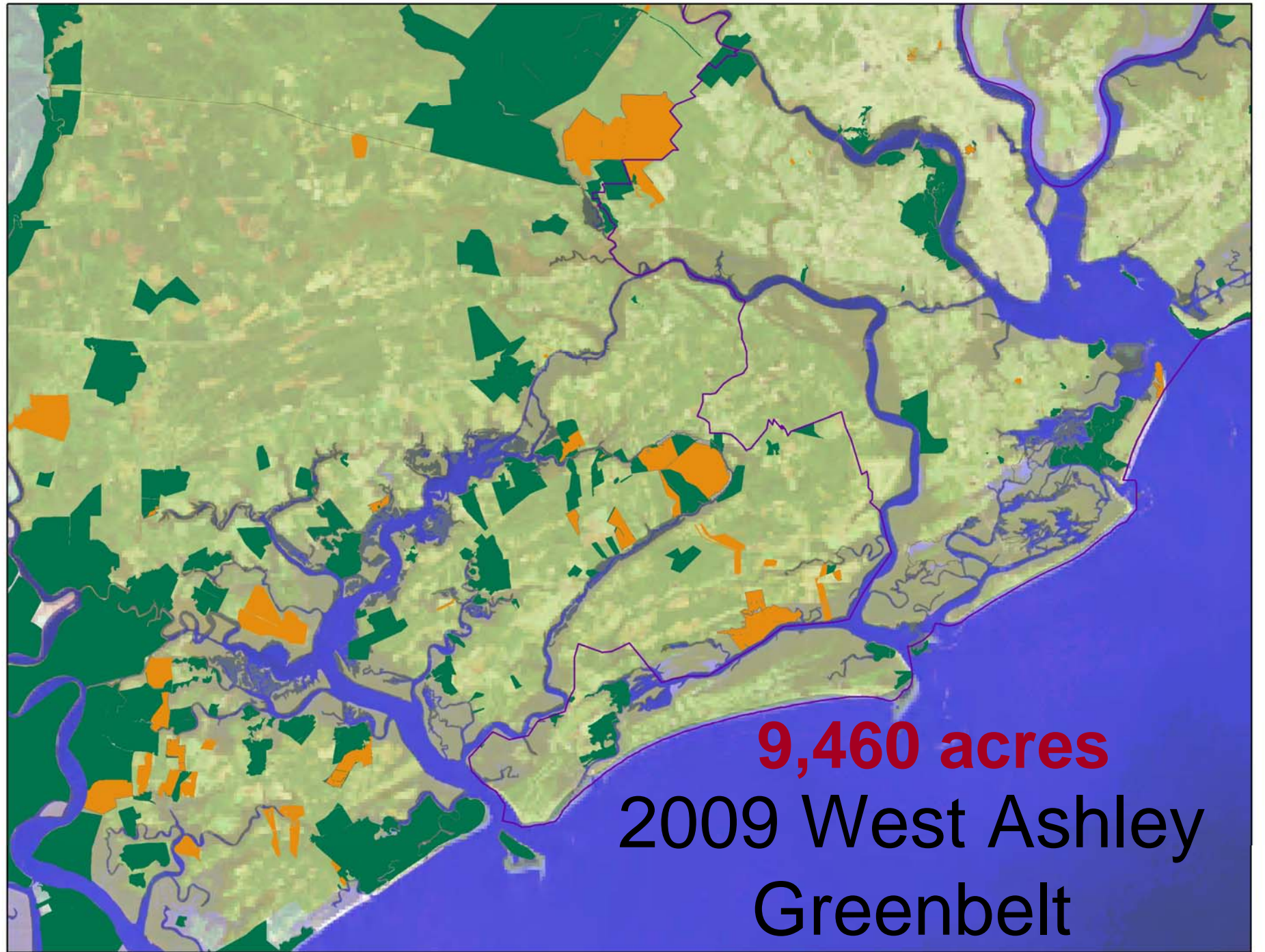
2006 Greenbelt



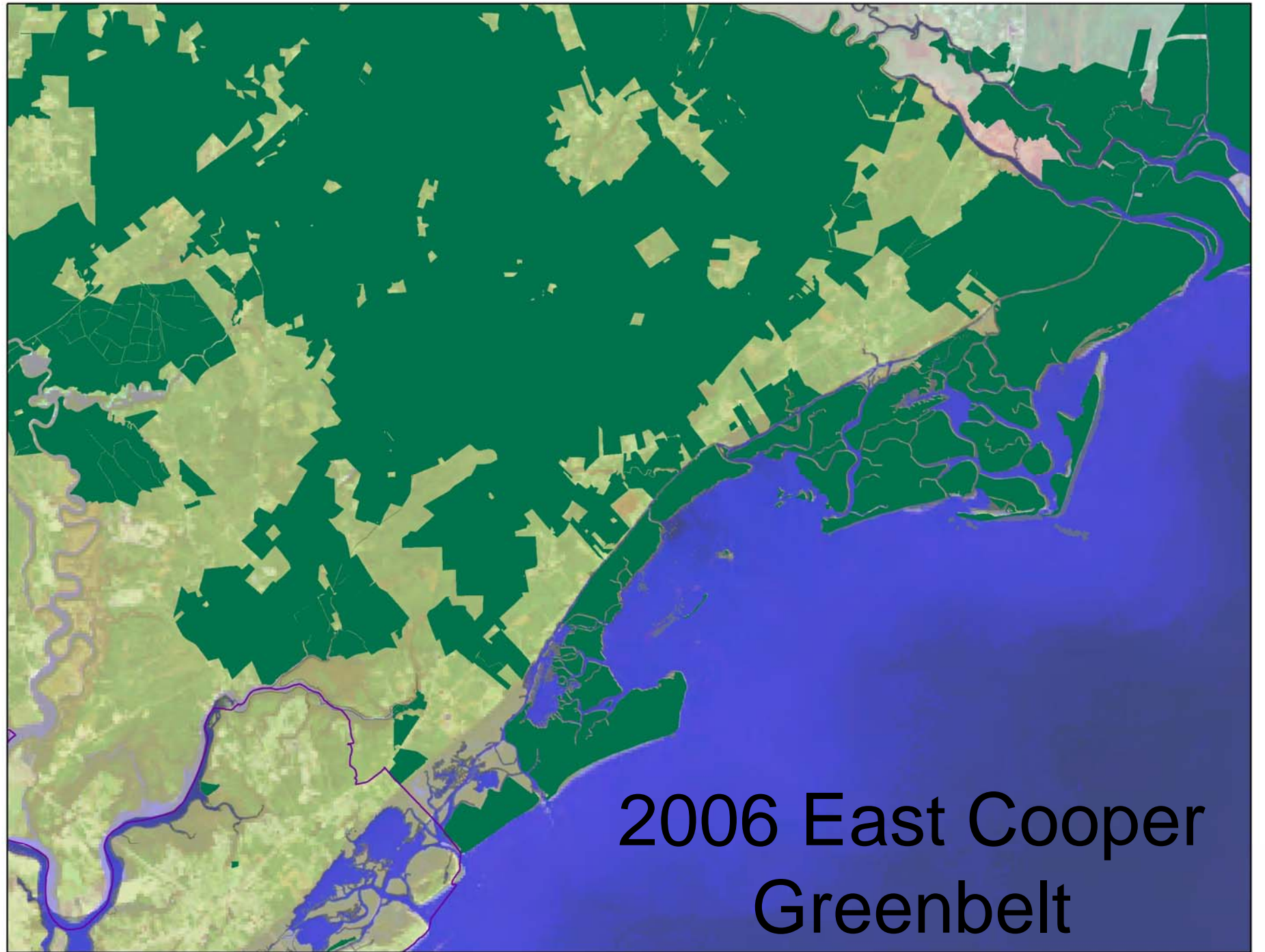
2009 Greenbelt
16,386 acres



2006 West Ashley
Greenbelt



9,460 acres
2009 West Ashley
Greenbelt



2006 East Cooper
Greenbelt

