

# GREENBELT BANK BOARD 2011 ANNUAL REPORT



## CONTACT INFO

Cathy L. Ruff, Director  
Charleston County Greenbelt Programs  
4045 Bridge View Drive  
North Charleston, SC 29405  
Phone: (843) 202-7204  
Fax: (843) 202-6152  
E-mail: [cruff@charlestoncounty.org](mailto:cruff@charlestoncounty.org)

For more information and to see pictures of  
all rural greenbelt projects,  
please visit our website at  
[www.smallchangeforbigchange.org](http://www.smallchangeforbigchange.org)



## CHARLESTON COUNTY

# GREENBELT BANK BOARD 2011 ANNUAL REPORT 1,160 ACRES ADDED TO RURAL PROGRAM

## 838 Acres Protected With Conservation Easements

During the 2011 calendar year, 6 rural greenbelt projects were approved by the Greenbelt Bank Board and County Council. By the end of 2011, four of those projects had closed adding 1,160 acres toward meeting the Greenbelt Plan's goal of protecting 40,000 acres.

The 785 acre Palmetto Plantation, pictured here, is located near McClellanville and contains a mile of frontage along the Intra-coastal waterway. The property which is adjacent to both the Francis Marion National Forest and the Cape Romain National Wildlife Refuge provides an important link between these public lands. The Nature Conservancy will hold the easement.



The Lowcountry Open Land Trust was awarded funding for two conservation easements to protect a 33 acre property in Meggett and another 19 acre parcel on Wadmalaw Island.

Additionally, rural funding was approved for a conservation easement on the Boy Scout Camp (Camp Ho Non Wah) on Wadma-

law Island. Once closed, this property will provide an additional 146 acres of protected land with public access.

## 322 Acres Purchased for Rural Parkland



The Charleston County Park and Recreation Commission (CCPRC) was awarded funds to purchase the 322 acre Bulow Hunt Club property pictured above.

Located in West Ashley, this property is adjacent to 200 acres that will be a City of Charleston park and the CCPRC's future site of the 1,570 acre Long Savannah Park.

Rural Greenbelt funds were also awarded to the US Forest Service for the purchase of 1,529 acres in the Francis Marion National Forest. Once closed these acres will be added to the public lands of the national forest.

## STATUS OF GREENBELT GOALS

- ◆ 6,272 acres of Rural Greenbelt Lands (39% of goal)
- ◆ 4,288 acres of Francis Marion National Forest Lands (42% of goal)
- ◆ 5,405 acres of Wetlands (96% of goal)
- ◆ 530 acres of Urban Lands (27% of goal)



## GREENBELT BANK BOARD

Hugh C. Lane, Jr.  
(Chair)

T. Heyward Carter, Jr.  
(Vice Chair)

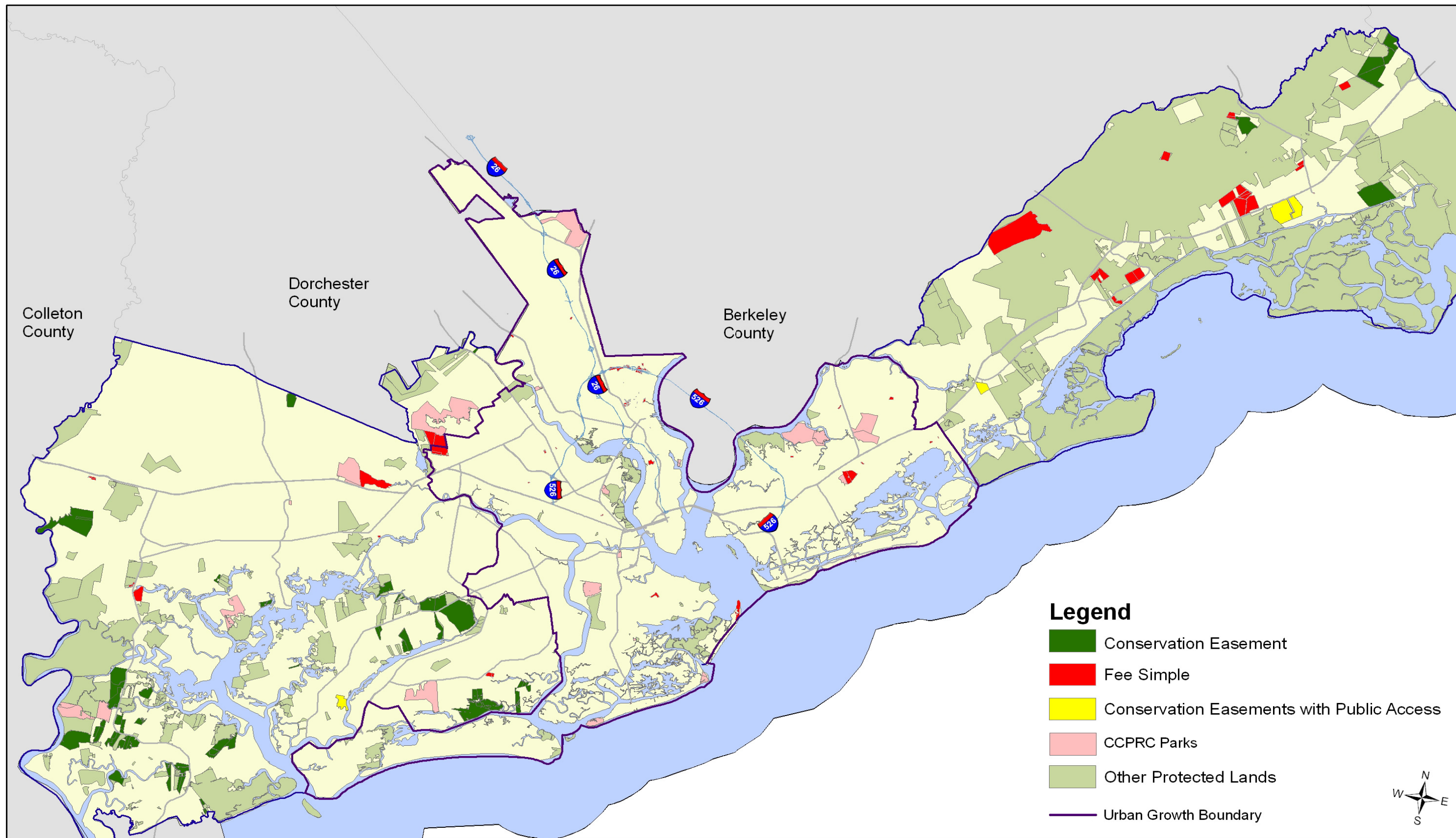
Margaret P. Blackmer  
George J. Bullwinkel, III

Thomas D. Bulwinkle  
Edwin H. Cooper, III

Wilbur E. Johnson  
Charles Salmonsens

John S. Templeton, Jr





Charleston County Greenbelt Projects (2007 - 2011)