

Rural Greenbelt Program Facts & Figures

Rural Funds Awarded

\$44 million

Fee Simple Purchases - \$27 million
Conservation Easements - \$17 million

Average Cost Per Acre

\$3,352

Fee Simple Purchases - \$10,152
Conservation Easements - \$1,654

Rural Acres Protected

12,927

Rural Land - 6,158 acres
National Forest - 3,023
Rural Wetlands - 3,746

Match Provided

\$79.6 million

Fee Simple Purchases - \$22.1 million
Conservation Easements - \$57.5 million

Rural Public Access Projects

19 Projects

Funds Awarded - \$28.3 million
Acreage - 3,421 acres



Contact Info

Charleston County Greenbelt Programs
4045 Bridge View Drive, Suite C-204
North Charleston, SC 29405

Phone: (843) 202-7204

Fax: (843) 202-6152

E-mail: cruff@charlestoncounty.org

**For more information and to see pictures of
all rural greenbelt projects,
please visit our website at
www.smallchangeforbigchange.org**



CHARLESTON COUNTY
GREENBELT BANK BOARD
2010 ANNUAL REPORT

GREENBELT BANK BOARD

Hugh C. Lane, Jr.
(Chair)

T. Heyward Carter, Jr.
(Vice Chair)

Margaret P. Blackmer

George J. Bullwinkel, III

Thomas D. Bulwinkle

Edwin H. Cooper, III

Wilbur E. Johnson

Charles Salmonsens

John S. Templeton, Jr.

**Greenbelt projects
are funded
through the
Charleston
County
Transportation
Sales Tax.**



470 Acres Added to Rural Greenbelt Program

180 Acres for Rural Parks

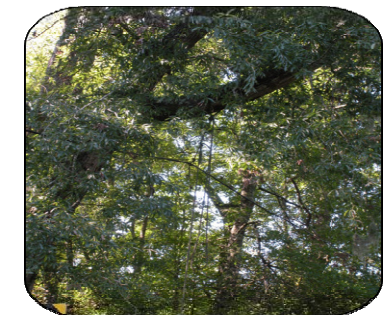
Town of McClellanville Old Cemetery Road

Rural greenbelt funds were awarded to the Town for the purchase of a 1.6 acre parcel that will be added to their adjacent 3 acre greenbelt property to provide a passive park and connect two walking/biking trails.



Wiltown Organization Community Park

The Wiltown Improvement Organization was awarded rural greenbelt funds to purchase 21 acres located off Parkers Ferry Road and Old Jacksonboro Road. The property will be managed as a community park.



Town of Meggett Walnut Hill

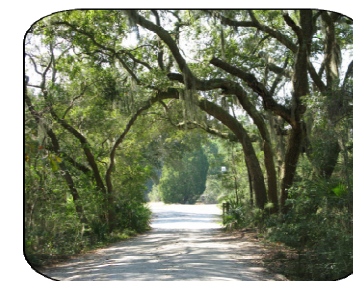
This 157 acre property is located on the Toogoodoo Creek and contains nearly 40 acres of ponds. It will be purchased by the Town for a passive park with access to the creek and ponds for fishing, crabbing, kayaking and canoeing.



290 Acres for Rural Preservation

Kinlaw Tract Edisto Island

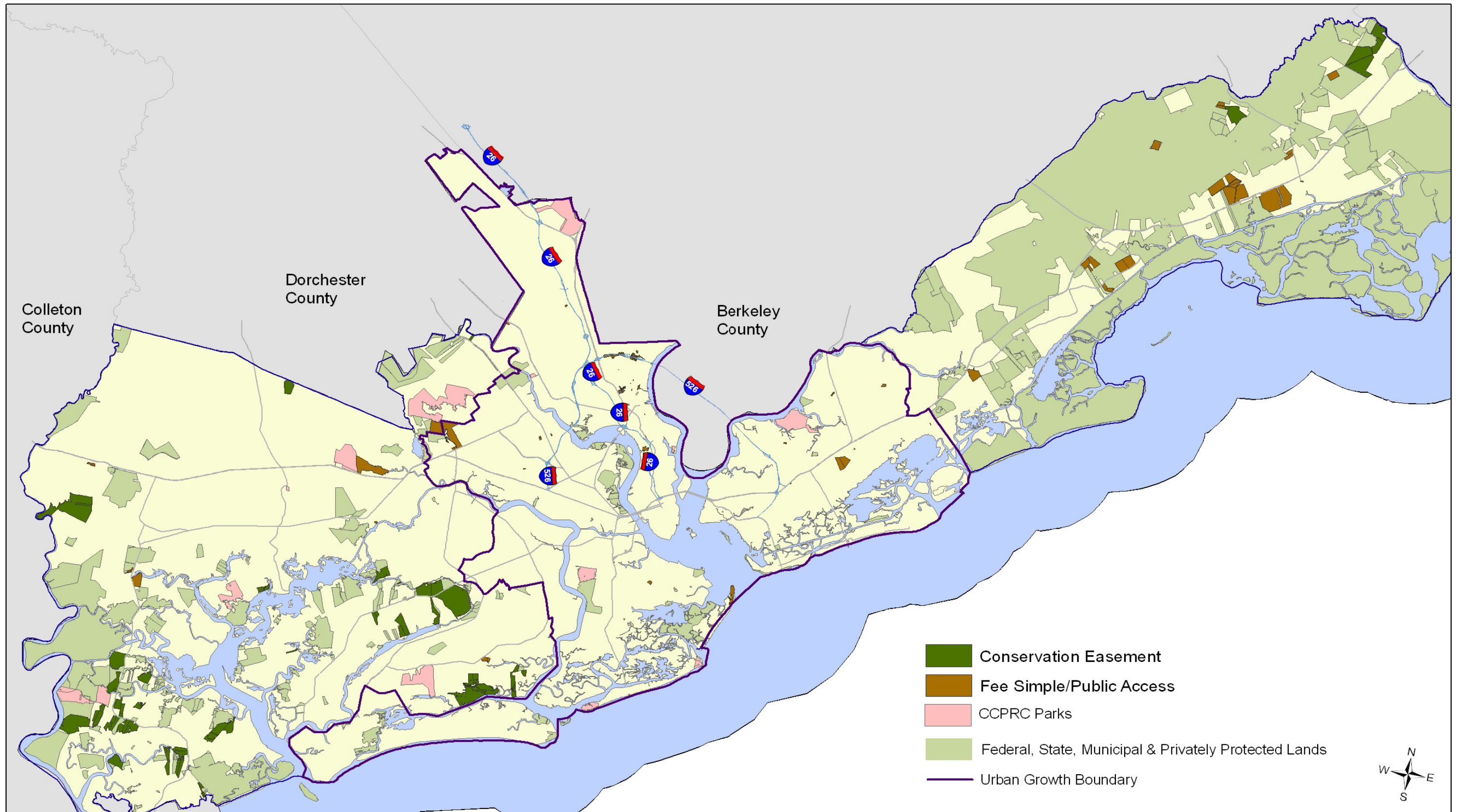
The Lowcountry Open Land Trust purchased a conservation easement on this 142 acre property located along scenic highway 174 and Milton Creek, forever protecting the land and its beautiful vistas.



Graves Ashe Point Farm Edisto Island

The Edisto Island Open Land Trust was awarded funds to place a conservation easement on this 149 acre property located on "Little Edisto", a peninsula with over 450 acres of protected land.





Charleston County Greenbelt Programs: 2007 - 2010 Approved Greenbelt Projects (With Other Protected Lands)

*Two Pines & Wingswood (Center for Birds of Prey) are easement projects with public access and are displayed as public access projects.