



# Greenbelt Bank Board

## 2009 Annual Report

## 6,511 Rural Acres Protected in 2009

Bringing total rural acres to 14,463

During 2009, 23 rural projects were approved, resulting in:

- 6,511 acres protected
- \$2,957 average cost per acre
- \$19.3 million in rural funds awarded
- \$32.5 million in match

### Rural Program Totals To Date

58 Projects Approved  
 14,463 Acres Protected  
 \$42.8 Million Awarded  
 \$90.7 Million Match

## Greenbelt Goals

To date, the Rural Greenbelt Program has protected 6,738 acres of rural lands; 4,455 acres of wetlands; and 3,270 acres within the Francis Marion National Forest; totaling 14,463 acres toward meeting the goal of 40,000 acres protected.

### Rural Lands

6,738 Acres



Millbrook Plantation protected 21 acres along scenic Highway 61.



Jefferson Tract provided 292 acres for a park in Awendaw.



Hastings-Governor's Bluff protected 140 acres on Edisto Island.



Charleston Area Therapeutic Riding protected 37 acres on Johns Island.

### Wetlands

4,455 Acres



Hampton Plantation protected 488 acres of wetlands (1,124 total) along the Santee River.



Hermitage Plantation protected 468 wetland acres (1,068 total) along the Edisto River.

### National Forest

3,270 Acres

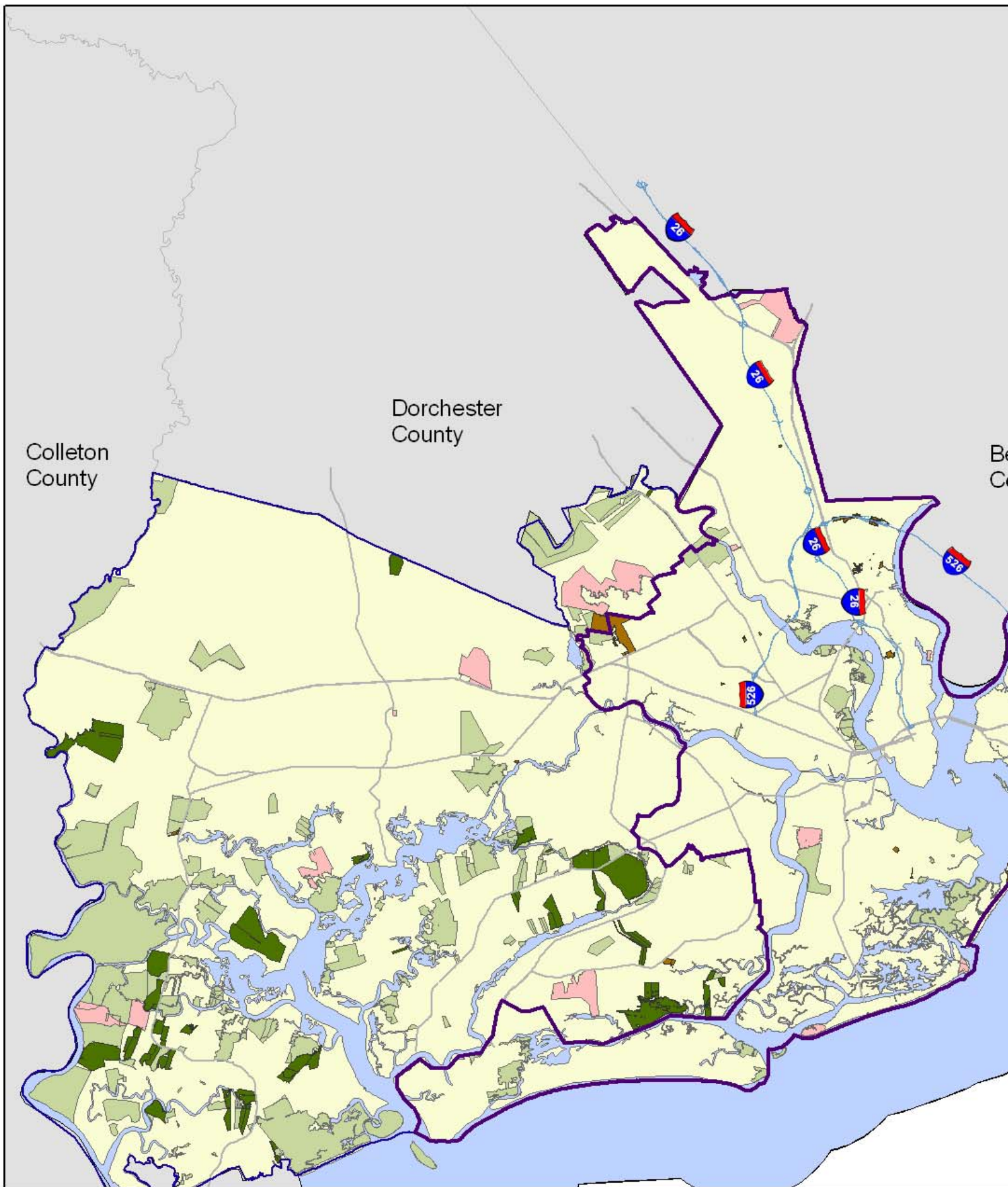


Oak Hill Farm added 64 acres to the Francis Marion National Forest.

**\$23.7  
Million**

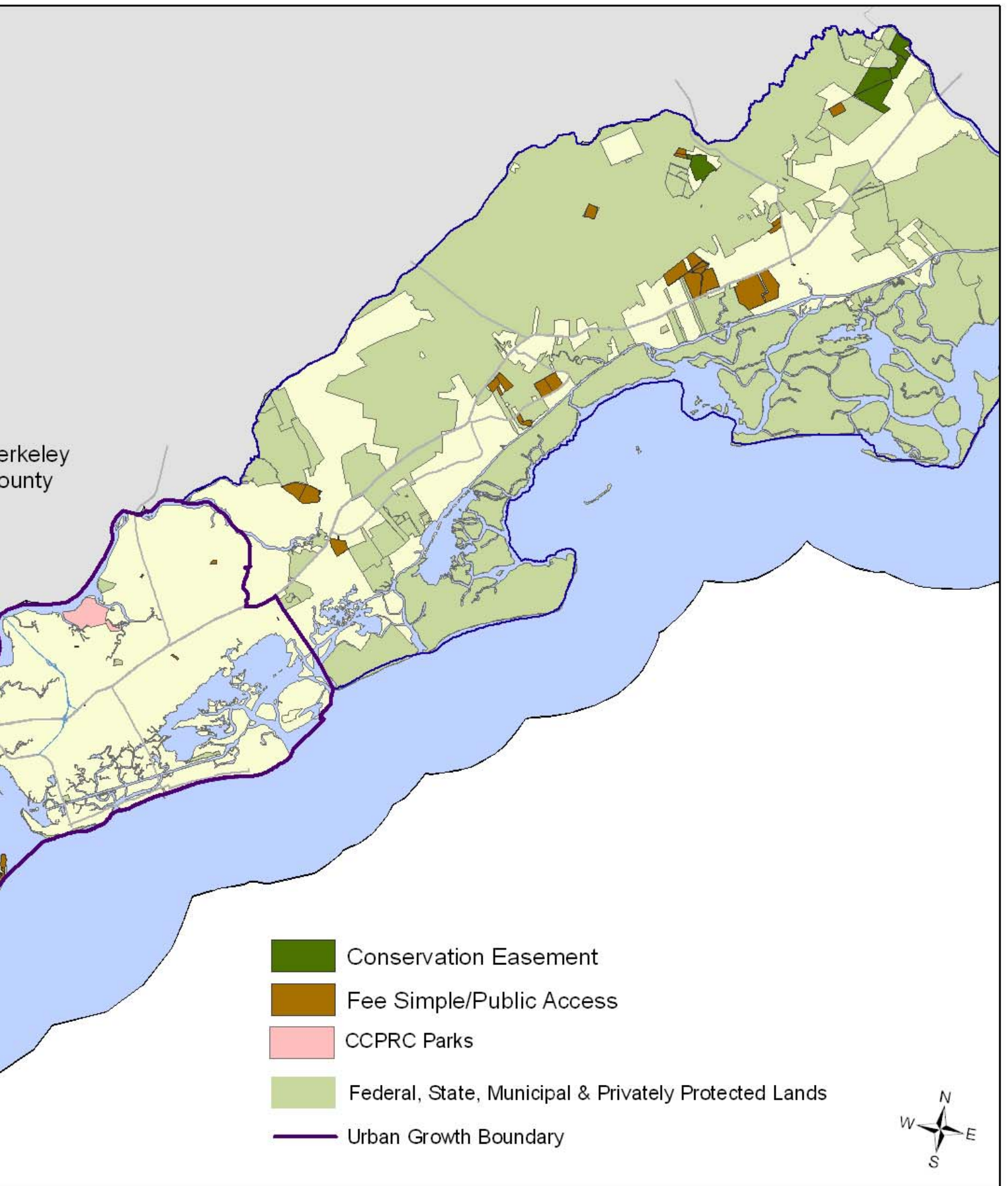
Remains for  
future Rural  
Projects





## Charleston County Greenbelt Programs: 2007 - 2009 Approved Greenbelt

\*Two Pines & Wingswood (Center for Birds of Prey) are easement projects with public access and are displayed as public access projects.



## San Francisco Peninsula Projects (With Other Protected Lands)

Projects.

# 3,400 Acres of Rural Lands For Public Use



## Municipal Parks (507 acres):

- Awendaw - Jefferson Tract
- Charleston - Bear Swamp
- Hollywood - Wide Awake Plantation
- McClellanville - Pinckney Street
- McClellanville - Cassena Street



## National Park (1,658 acres):

- Bulls Bay Tract
- Murrell Tract
- Oak Hill Farm
- Tibwin Project
- Wando River Tract



## County Parks (874 acres):

- Awendaw - Bulls Bay Village
- McClellanville - Two Pines



## Non-Profits (362 acres):

- Awendaw - Center for Birds of Prey
- Awendaw - Ten Mile Community
- Johns Island - Charleston Area Therapeutic Riding
- McClellanville - Sweetgrass Society
- McClellanville - Village Museum



## Contact Info:

Charleston County Greenbelt Programs  
4045 Bridge View Drive, Suite C-204  
North Charleston, SC 29405

Phone: (843) 202-7204  
Fax: (843) 202-7244  
E-mail: [cruff@charlestoncounty.org](mailto:cruff@charlestoncounty.org)

For more information and to see pictures of rural greenbelt projects, visit [www.smallchangeformbigchange.org](http://www.smallchangeformbigchange.org)

## Greenbelt Bank Board

- Hugh C. Lane, Jr. (Chair)
- T. Heyward Carter, Jr., (Vice Chair)
- Margaret P. Blackmer
- George J. Bullwinkel, III
- Thomas D. Bulwinkle
- Edwin H. Cooper, III
- Wilbur E. Johnson
- Charles Salmonsens
- John S. Templeton, Jr.

